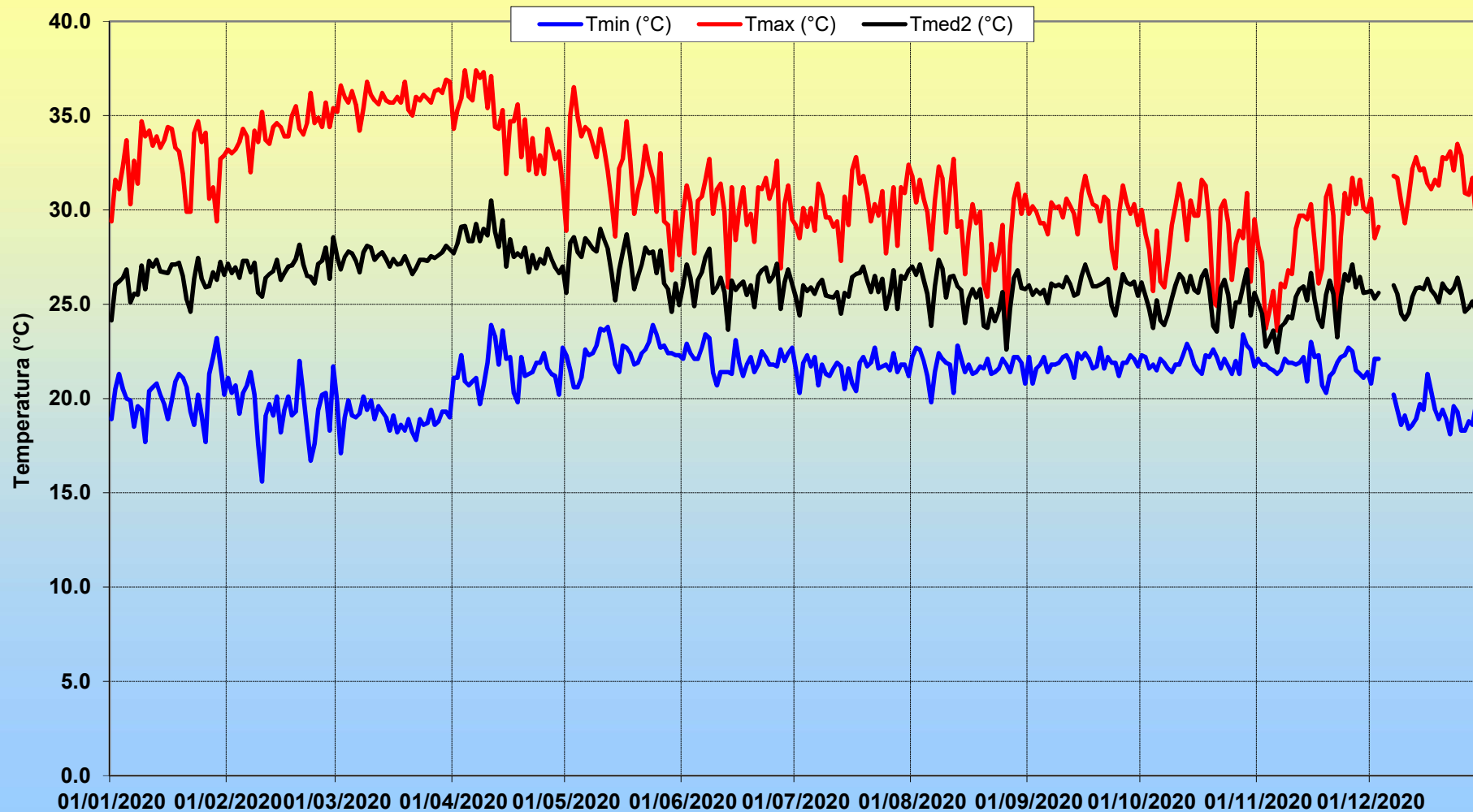


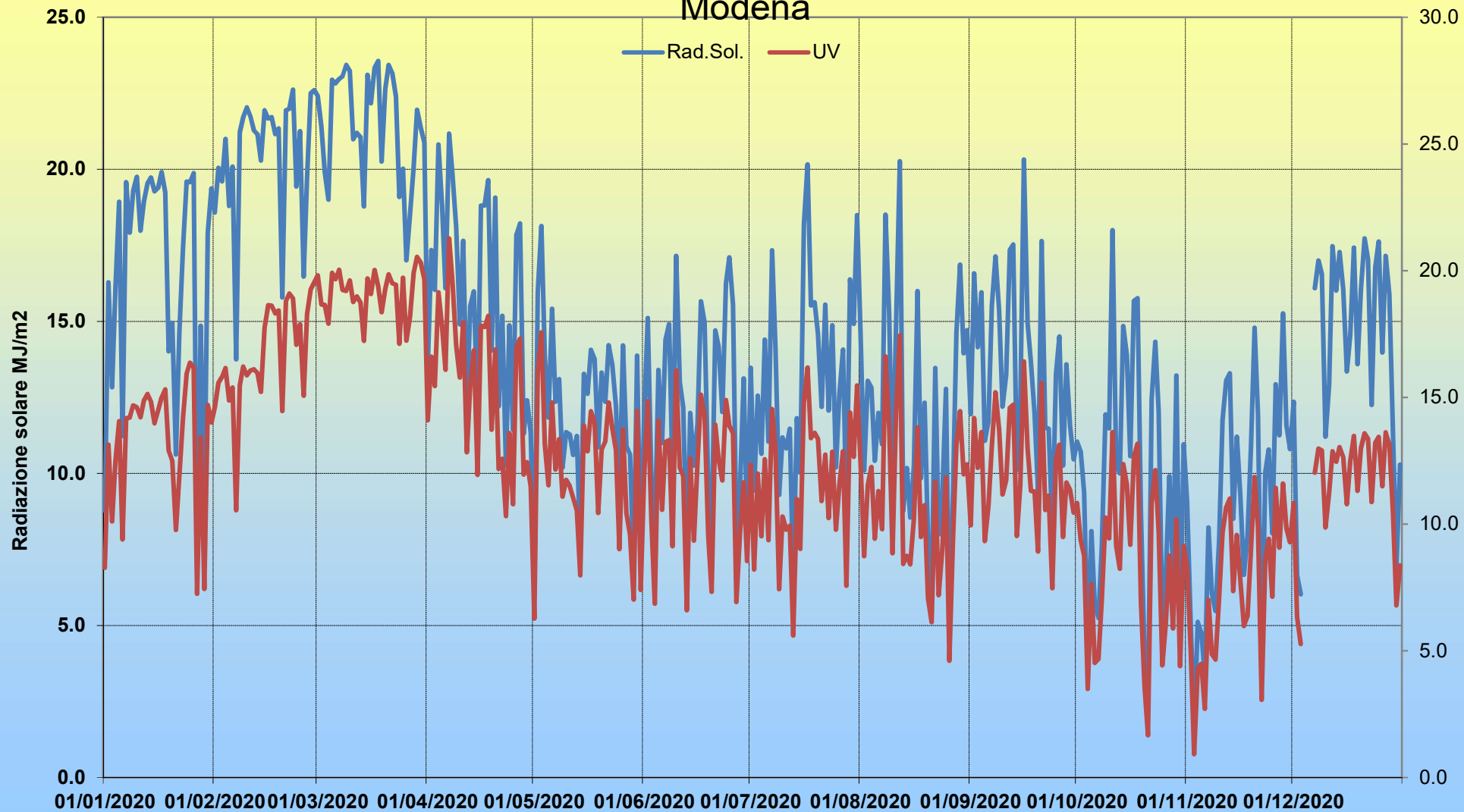
# Temperature giornaliere a Karen Mogensen, Costa Rica

Osservatorio Geofisico DIEF UNIMORE - Foreste Per Sempre GEV Modena

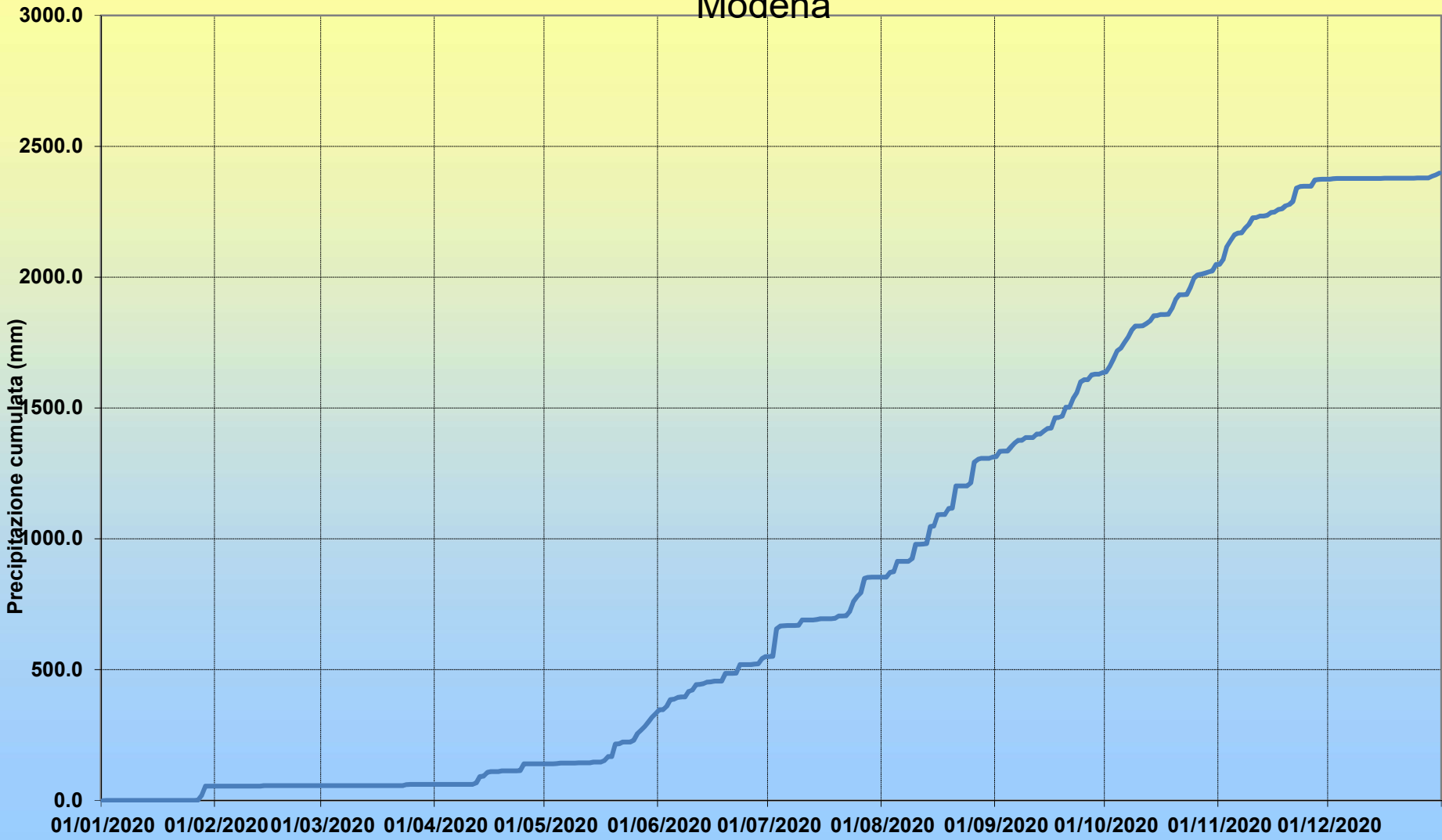


Radiazione solare giornaliera a Karen Mogensen, Costa Rica  
Osservatorio Geofisico DIF UNIMORE - Foreste Per Sempre GEV

Modena



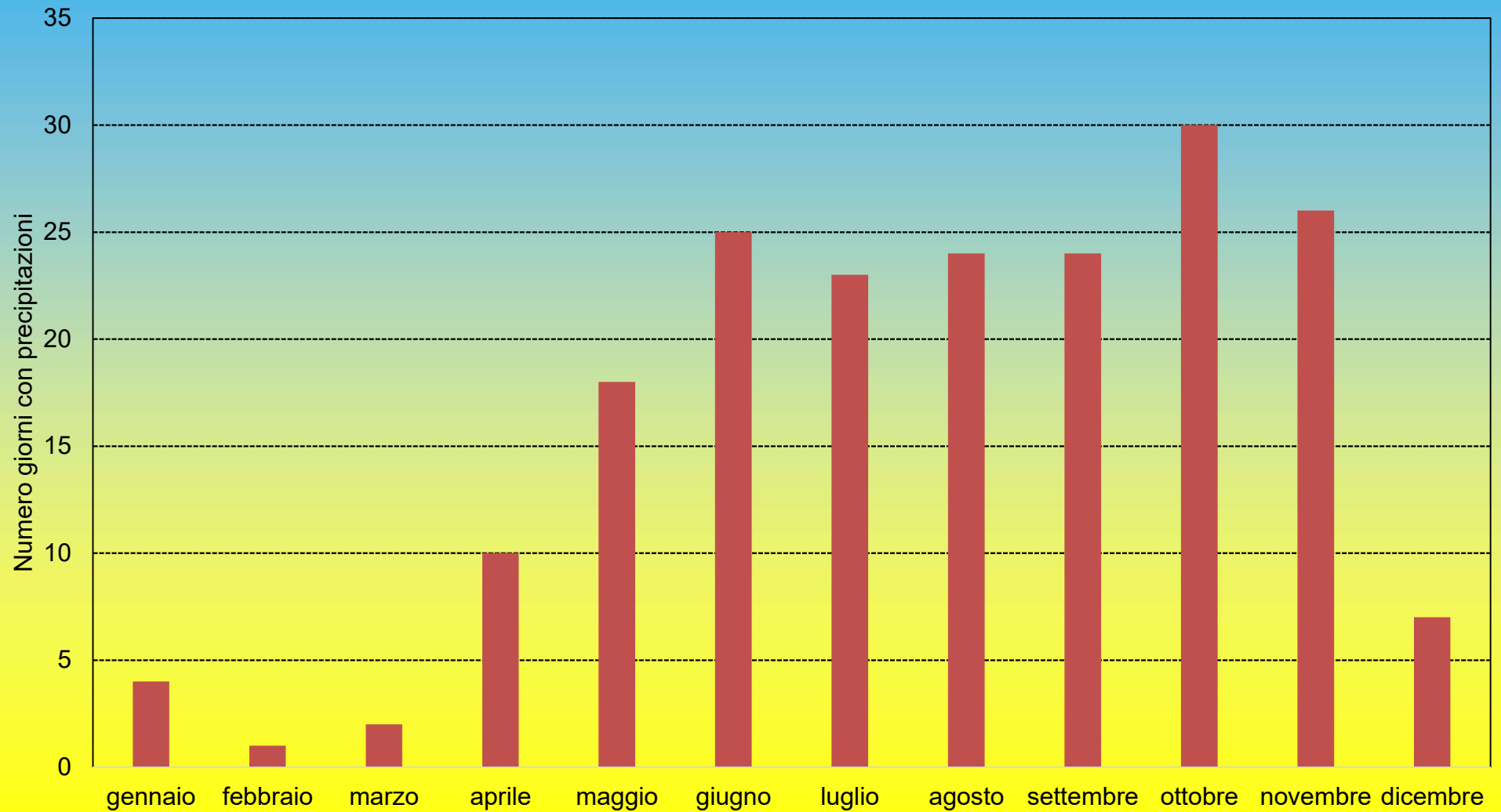
Precipitazioni cumulate a Karen Mogensen, Costa Rica  
Osservatorio Geofisico DIF UNIMORE - Foreste Per Sempre GEV  
Modena



# Giorni piovosi a Karen Mogensen, Costa Rica

Osservatorio Geofisico DIEF UNIMORE - Foreste Per Sempre GEV Modena

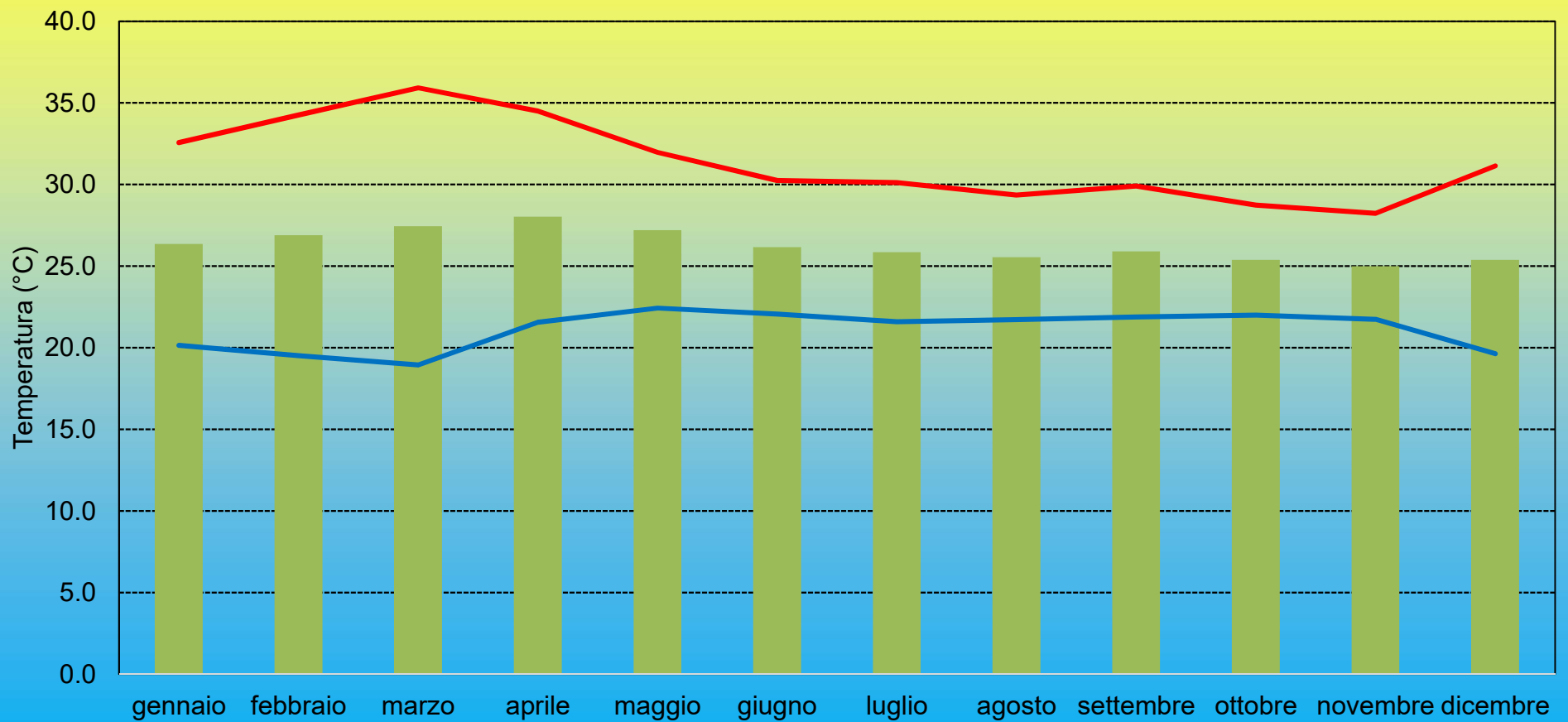
■ Pmm >0 mm



# Temperature mensili 2019 a Karen Mogensen, Costa Rica

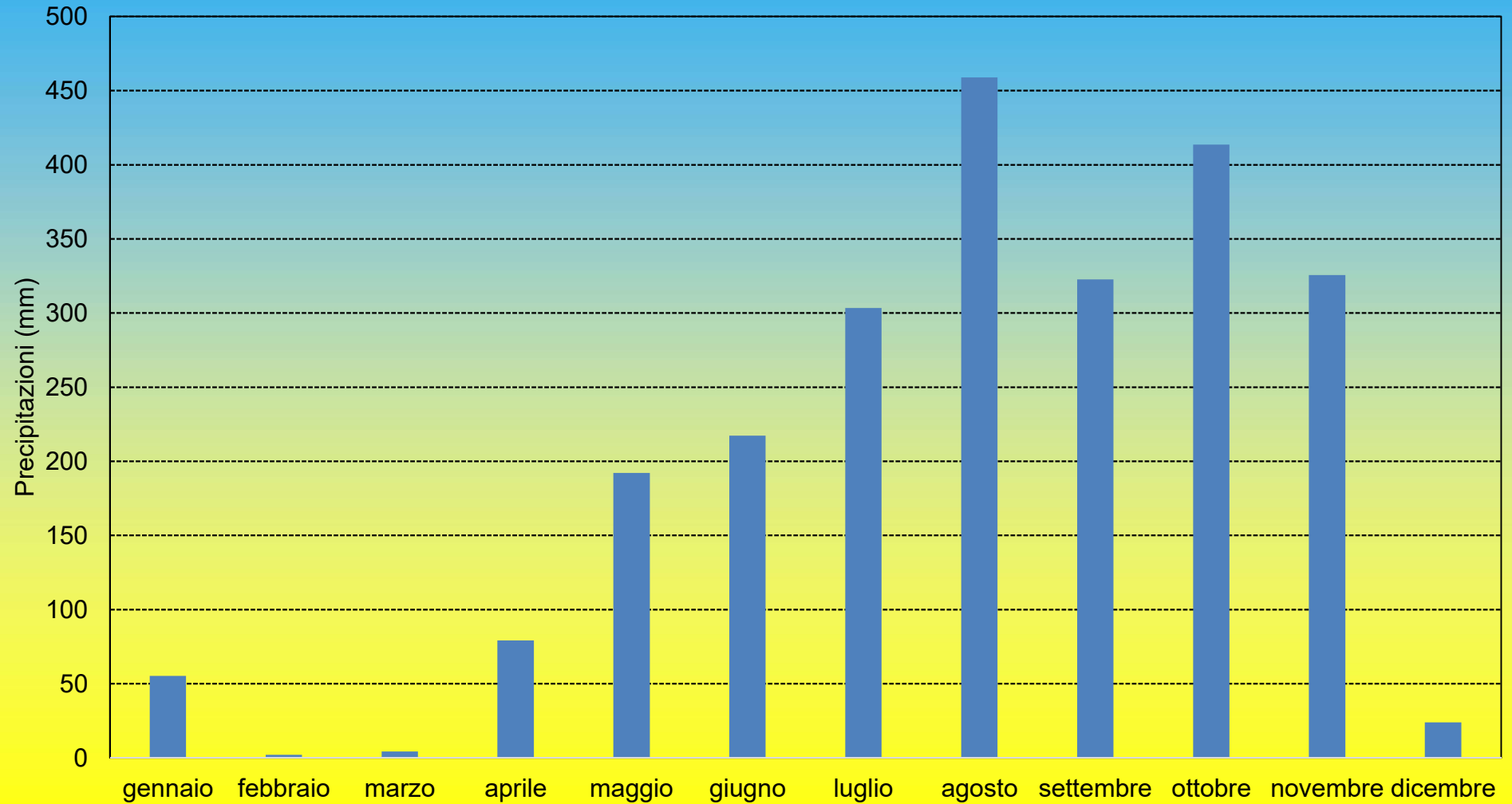
Osservatorio Geofisico DIEF UNIMORE - Foreste Per Sempre GEV Modena

Media di Tmed    Media di Tmin    Media di Tmax



# Precipitazioni mensili a Karen Mogensen, Costa Rica

Osservatorio Geofisico Dief UNIMORE - Foreste Per Sempre GEV Modena



Dipartimento di Ingegneria "Enzo Ferrari" Osservatorio Geofisico [www.ossgeo.unimore.it](http://www.ossgeo.unimore.it)

riepilogo meteorologico valori mensili

Stazione meteo "Karen Costa Rica"

	gen	feb	mar	apr	mag	giu	lug	ago	set	ott	nov	dic	anno
Temp.Min mensile assoluta (Min Tmin) o "giorno più freddo": in °C	17.7	15.6	17.1	19.7	20.6	20.7	20.3	19.8	20.8	21.3	20.3	18.1	15.6
Temp.Max assoluta Max Tmax o "giorno più caldo": in °C	34.7	36.2	36.9	37.4	36.5	32.7	32.8	32.7	31.8	31.6	31.7	33.5	37.4
Media delle temperature minime (Med Tmin), in °C	20.1	19.5	18.9	21.6	22.4	22.1	21.6	21.7	21.9	22.0	21.7	19.6	21.1
Media delle temperature massime (Med Tmax), in °C	32.6	34.3	35.9	34.5	32.0	30.3	30.1	29.4	29.9	28.7	28.2	31.1	31.4
Temperatura media mensile (Med Tmed), in °C	26.4	26.9	27.4	28.0	27.2	26.2	25.8	25.5	25.9	25.4	25.0	25.4	26.3
Numero giorni di ghiaccio o di "gelo senza disgelo" (Ngg Tmax<=0°C)	0	0	0	0	0	0	0	0	0	0	0	0	0
Numero giorni di gelo (Ngg Tmin<=0°C)	0	0	0	0	0	0	0	0	0	0	0	0	0
Pioggia (o neve fusa) totale nel mese (Somma Pmm), in mm	55.2	2.0	4.2	79.2	192.0	217.2	303.4	458.8	322.6	413.6	325.6	23.8	2397.6
Massima precipitazione giornaliera (Max Pmm giorn.):	35.6	2.0	4.0	25.6	48.0	32.6	105.0	84.8	41.4	36.8	51.4	7.6	105.0
Numero giorni con precipitazioni fra 0 e 1 mm (N.gg Pmm>0 e Pmm<1)	1	0	1	2	4	7	8	7	3	5	4	1	43
Numero giorni piovosi "idrologici" con 1 o più mm (N.gg Pmm>=1mm)	3	1	1	8	14	18	15	17	21	25	22	6	151
Numero giorni piovosi "meteorologici" (N.gg Pmm>0 mm)	4	1	2	10	18	25	23	24	24	30	26	7	194
Pressione atmosferica media mensile (Media Press) in hPa	1014.5	1014.0	1014.6	1014.6	1014.4	1014.7	1014.5	1014.6	1014.7	1014.1	1014.6	1014.8	1014.5
Radiazione solare cumulata nel mese (Rad.Solare) in MJ/m2	513.2	593.4	666.2	474.9	372.0	368.7	408.2	369.3	404.7	305.1	269.9	397.5	5143.1
Umidità relativa media mensile (Umed) in %	69.6	69.5	72.5	81.9	88.6	91.8	91.2	92.3	92.9	94.7	95.0	89.1	85.7
Massima velocità raggiunta dal vento o raffica (Vento Max) in km/h	24.1	25.7	22.5	22.5	25.7	24.1	16.1	32.2	17.7	16.1	19.3	17.7	32.2
UV Dose in MED	409.54	484.03	593.73	462.04	373.8	348.9	356.87	335.4	359.56	259.59	228.01	321.85	4533.32
numero di giorni "caldi" (Tmax >=30°C)	27.0	29.0	31.0	30.0	22.0	19.0	16.0	13.0	16.0	10	8	22	243

**Dipartimento di Ingegneria "Enzo Ferrari"**  
**Università degli studi di Modena e Reggio Emilia**

**Osservatorio Geofisico - Stazione meteorologica di**  
**Karen Mogensen Reserve, Costa Rica,**

**gennaio 2020**

	Tmin (°C)	Tmax (°C)	Tmed2 (°C)	PressMe d (hPa)	Umed (%)	Prec Tot (mm)	VelVent o Med (km/h)	DirVento domin.	VelVent o Max (km/h)	Rad.sol MJ/m2	UV dose MED
01/01/2020	18.9	29.4	24.2	1014.7	71.1	0	0	ESE	6.4	8.77	8.28
02/01/2020	20.5	31.6	26.1	1015.1	69.2	0.2	0	N	8	16.28	13.13
03/01/2020	21.3	31.1	26.2	1016.5	72.4	0	0	SE	11.3	12.83	10.11
04/01/2020	20.5	32.3	26.4	1017.4	70.3	0	0	E	4.8	16.12	12.51
05/01/2020	20	33.7	26.9	1017.3	71.0	0	0.5	N	12.9	18.93	14.06
06/01/2020	19.9	30.3	25.1	1015.9	71.7	0	0	SE	4.8	11.23	9.4
07/01/2020	18.5	32.6	25.6	1015.6	66.3	0	0.3	ESE	24.1	19.58	14.18
08/01/2020	19.6	31.4	25.5	1014.8	70.9	0	0.6	ESE	17.7	17.92	14.2
09/01/2020	19.4	34.7	27.1	1012.8	70.3	0	0.2	E	12.9	19.29	14.68
10/01/2020	17.7	33.9	25.8	1011.3	67.3	0	0.3	N	12.9	19.76	14.61
11/01/2020	20.4	34.2	27.3	1012.5	70.6	0	0	N	14.5	17.98	14.21
12/01/2020	20.6	33.4	27.0	1012.2	68.9	0	0.3	N	16.1	18.94	14.87
13/01/2020	20.8	33.9	27.4	1012.0	68.9	0	0.3	N	12.9	19.54	15.13
14/01/2020	20.2	33.3	26.8	1011.4	68.3	0	0.6	E	20.9	19.73	14.84
15/01/2020	19.7	33.7	26.7	1012.0	68.7	0	0.3	N	16.1	19.27	13.97
16/01/2020	18.9	34.4	26.7	1012.3	69.0	0	0	ESE	11.3	19.39	14.48
17/01/2020	19.9	34.3	27.1	1011.3	69.3	0	0.2	ENE	16.1	19.91	15
18/01/2020	20.9	33.3	27.1	1011.6	68.4	0	0.3	N	17.7	19.24	15.32
19/01/2020	21.3	33.1	27.2	1012.7	71.2	0	0.2	E	14.5	14.01	12.9
20/01/2020	21.1	31.9	26.5	1014.4	68.8	0	0.3	ESE	12.9	14.95	12.49
21/01/2020	20.6	29.9	25.3	1015.9	73.8	0	0	N	6.4	10.62	9.77
22/01/2020	19.3	29.9	24.6	1015.8	71.8	0	0	N	12.9	14.62	11.9
23/01/2020	18.6	34.1	26.4	1015.4	70.7	0	0	SE	6.4	17.40	14.19
24/01/2020	20.2	34.7	27.5	1015.7	68.9	0	0	E	6.4	19.59	15.92
25/01/2020	19.1	33.6	26.4	1016.4	69.2	0	0	WNW	8	19.58	16.37
26/01/2020	17.7	34.1	25.9	1016.8	68.7	0	0	ESE	9.7	19.87	16.19
27/01/2020	21.3	30.6	26.0	1017.0	70.4	1.4	0	E	4.8	7.09	7.25
28/01/2020	22.2	31.2	26.7	1015.9	67.8	18	0.5	N	20.9	14.86	13.43
29/01/2020	23.2	29.4	26.3	1015.9	64.8	35.6	0	N	6.4	8.64	7.44
30/01/2020	21.8	32.7	27.3	1014.9	68.6	0	0	N	9.7	17.92	14.7
31/01/2020	20.2	32.9	26.6	1014.7	69.4	0	0	E	12.9	19.37	14.01
1° decade	19.6	32.1	25.9	1015.2	70.0	0.2	0.2		24.1	160.7	125.2
2° decade	20.4	33.6	27.0	1012.2	69.2	0.0	0.3		20.9	183.0	143.2
3° decade	20.4	32.1	26.2	1015.9	69.5	55.0	0.0		20.9	169.6	141.2
<b>MESE</b>	<b>20.1</b>	<b>32.6</b>	<b>26.4</b>	<b>1014.5</b>	<b>69.6</b>	<b>55.2</b>	<b>0.2</b>	<b>#RIF!</b>	<b>24.1</b>	<b>513.2</b>	<b>409.5</b>
<i>Min</i>	17.7	29.4	24.2	1011.3	64.8	0.0	0.0		4.8	7.1	7.2
<i>Max</i>	23.2	34.7	27.5	1017.4	73.8	35.6	0.6		24.1	19.9	16.4
<i>Dev.St.</i>	1.2	1.7	0.8	2.0	1.8	7.1	0.2		5.1	3.8	2.5



**Dipartimento di Ingegneria "Enzo Ferrari"**  
**Università degli studi di Modena e Reggio Emilia**

**Osservatorio Geofisico - Stazione meteorologica di**  
**Karen Mogensen Reserve, Costa Rica,**

febbraio 2020

	Tmin (°C)	Tmax (°C)	Tmed2 (°C)	PressMe d (hPa)	Umed (%)	Prec Tot (mm)	VelVent o Med (km/h)	DirVento domin.	VelVent o Max (km/h)	Rad.sol MJ/m2	UV dose MED
01/02/2020	21.1	33.2	27.2	1015.6	69.1	0	0	W	9.7	18.58	14.61
02/02/2020	20.3	33	26.7	1014.9	69.2	0	0.6	ENE	19.3	20.05	15.57
03/02/2020	20.7	33.2	27.0	1014.9	68.0	0	0.2	N	12.9	19.60	15.81
04/02/2020	19.2	33.6	26.4	1014.9	69.5	0	0	NNE	9.7	21.00	16.16
05/02/2020	20.3	34.3	27.3	1013.6	69.1	0	0	E	8	18.79	14.87
06/02/2020	20.7	33.9	27.3	1013.2	68.2	0	0	N	11.3	20.09	15.39
07/02/2020	21.4	32	26.7	1014.7	70.2	0	0	ESE	9.7	13.75	10.55
08/02/2020	20.2	34.2	27.2	1015.8	65.2	0	0	N	11.3	21.22	15.48
09/02/2020	17.6	33.6	25.6	1015.0	64.7	0	0.5	N	20.9	21.71	16.22
10/02/2020	15.6	35.2	25.4	1013.4	67.2	0	0.2	N	12.9	22.04	15.87
11/02/2020	19.1	33.7	26.4	1013.5	67.5	0	0.2	W	12.9	21.73	16.06
12/02/2020	19.7	33.5	26.6	1012.9	67.5	0	0.3	NE	16.1	21.28	16.11
13/02/2020	19.1	34.4	26.8	1012.7	67.6	0	0.2	N	9.7	21.15	15.96
14/02/2020	20.1	34.6	27.4	1013.1	66.8	2	0.3	ESE	14.5	20.29	15.22
15/02/2020	18.2	34.4	26.3	1012.7	72.5	0	0.5	E	19.3	21.94	17.75
16/02/2020	19.4	33.9	26.7	1011.5	67.2	0	0.8	ESE	17.7	21.66	18.64
17/02/2020	20.1	33.9	27.0	1010.2	67.0	0	1	ESE	20.9	21.72	18.62
18/02/2020	19.1	35	27.1	1010.4	73.3	0	0.6	E	16.1	21.16	18.31
19/02/2020	19.3	35.5	27.4	1012.1	70.3	0	0.6	ESE	17.7	21.34	18.43
20/02/2020	22	34.3	28.2	1012.9	71.1	0	0.6	ESE	17.7	15.79	14.46
21/02/2020	20.2	34	27.1	1015.6	73.8	0	0.5	E	17.7	21.94	18.8
22/02/2020	18.4	34.6	26.5	1015.9	64.3	0	1	ESE	17.7	21.98	19.1
23/02/2020	16.7	36.2	26.5	1014.7	67.2	0	0.2	ESE	11.3	22.62	18.91
24/02/2020	17.6	34.6	26.1	1014.8	76.7	0	0.3	SE	14.5	19.43	17.08
25/02/2020	19.4	34.9	27.2	1015.3	78.7	0	0.3	ESE	14.5	21.25	17.88
26/02/2020	20.2	34.4	27.3	1016.1	80.7	0	0.3	N	14.5	16.47	15.07
27/02/2020	20.3	35.7	28.0	1016.0	78.5	0	0.3	N	16.1	19.75	18.29
28/02/2020	18.3	34.4	26.4	1015.6	63.0	0	1.3	N	22.5	22.50	19.26
29/02/2020	21.7	35.4	28.6	1015.2	60.2	0	1.4	N	25.7	22.60	19.55
1° decade	19.7	33.6	26.7	1014.6	68.0	0.0	0.2		20.9	196.8	150.5
2° decade	19.6	34.3	27.0	1012.2	69.1	2.0	0.5		20.9	208.0	169.6
3° decade	19.2	34.9	27.1	1015.5	71.4	0.0	0.6		25.7	188.5	163.9
MESE	19.5	34.3	26.9	1014.0	69.5	2.0	0.4	#RIF!	25.7	593.4	484.0
Min	15.6	32.0	25.4	1010.2	60.2	0.0	0.0		8.0	13.8	10.6
Max	22.0	36.2	28.6	1016.1	80.7	2.0	1.4		25.7	22.6	19.6
Dev.St.	1.5	0.9	0.7	1.7	4.8	0.4	0.4		4.4	2.1	2.0

**Dipartimento di Ingegneria "Enzo Ferrari"**  
**Università degli studi di Modena e Reggio Emilia**

**Osservatorio Geofisico - Stazione meteorologica di  
 Karen Mogensen Reserve, Costa Rica,**

marzo 2020

	Tmin (°C)	Tmax (°C)	Tmed2 (°C)	PressMe d (hPa)	Umed (%)	Prec Tot (mm)	VelVent o Med (km/h)	DirVento domin.	VelVent o Max (km/h)	Rad.sol MJ/m2	UV dose MED
01/03/2020	19.8	35.2	27.5	1014.7	69.5	0	0.3	N	9.7	22.41	19.82
02/03/2020	17.1	36.6	26.9	1014.2	69.7	0	0.3	N	11.3	21.40	18.67
03/03/2020	19	36	27.5	1013.8	77.0	0	0.2	W	11.3	19.90	18.65
04/03/2020	19.9	35.7	27.8	1013.9	78.4	0	0.2	N	11.3	19.00	17.91
05/03/2020	19.1	36.3	27.7	1014.1	75.1	0	0.2	N	11.3	22.95	19.91
06/03/2020	19	35.6	27.3	1014.9	73.3	0	0.5	N	16.1	22.83	19.66
07/03/2020	19.2	34.2	26.7	1014.5	65.8	0	1.1	N	20.9	22.97	20.04
08/03/2020	20.1	35.4	27.8	1013.5	61.0	0	1.1	N	17.7	23.06	19.24
09/03/2020	19.4	36.8	28.1	1014.1	60.3	0	0.6	N	14.5	23.43	19.2
10/03/2020	19.9	36.1	28.0	1014.8	65.2	0	0.5	N	14.5	23.23	19.61
11/03/2020	18.9	35.8	27.4	1013.8	71.7	0	0.5	N	17.7	20.99	18.76
12/03/2020	19.6	35.6	27.6	1012.6	72.4	0	0.3	N	9.7	21.20	18.98
13/03/2020	19.3	36.2	27.8	1014.9	75.3	0	0.3	E	12.9	21.06	18.74
14/03/2020	19	35.8	27.4	1016.1	76.3	0	0.3	N	12.9	18.78	17.23
15/03/2020	18.3	35.7	27.0	1015.7	74.3	0	0.3	N	12.9	23.10	19.69
16/03/2020	19.1	35.7	27.4	1015.1	69.5	0	0.5	N	17.7	22.17	19.08
17/03/2020	18.2	36	27.1	1015.3	72.7	0	0.5	N	12.9	23.33	20.03
18/03/2020	18.6	35.7	27.2	1015.4	71.3	0	0.3	N	12.9	23.56	19.37
19/03/2020	18.3	36.8	27.6	1016.4	74.2	0	0.3	ESE	16.1	20.26	18.36
20/03/2020	18.9	35.3	27.1	1017.5	75.0	0	0.3	N	16.1	22.64	19.28
21/03/2020	18.2	35	26.6	1016.1	69.9	0	0.6	N	22.5	23.43	19.85
22/03/2020	17.8	36	26.9	1015.1	69.4	0	0.3	N	12.9	23.16	19.5
23/03/2020	18.9	35.8	27.4	1016.1	70.2	0	0.5	N	16.1	22.39	19.44
24/03/2020	18.6	36.1	27.4	1015.8	77.8	4	0.3	N	9.7	19.09	17.12
25/03/2020	18.7	35.9	27.3	1014.1	79.0	0.2	0.2	N	14.5	20.02	19.72
26/03/2020	19.4	35.7	27.6	1013.4	78.8	0	0.3	N	11.3	17.01	17.24
27/03/2020	18.6	36.3	27.5	1012.4	76.4	0	0.3	N	12.9	18.52	18.19
28/03/2020	18.8	36.4	27.6	1012.7	75.3	0	0.2	N	12.9	20.09	19.92
29/03/2020	19.3	36.2	27.8	1013.6	74.3	0	0.5	N	16.1	21.96	20.54
30/03/2020	19.3	36.9	28.1	1013.7	72.8	0	0.3	N	12.9	21.37	20.32
31/03/2020	19	36.8	27.9	1013.1	74.4	0	0.3	N	12.9	20.89	19.66
1° decade	19.3	35.8	27.5	1014.2	69.5	0.0	0.5		20.9	221.2	192.7
2° decade	18.8	35.9	27.3	1015.3	73.3	0.0	0.4		17.7	217.1	189.5
3° decade	18.8	36.1	27.4	1014.2	74.4	4.2	0.3		22.5	227.9	211.5
MESE	18.9	35.9	27.4	1014.6	72.5	4.2	0.4	#RIF!	22.5	666.2	593.7
Min	17.1	34.2	26.6	1012.4	60.3	0.0	0.2		9.7	17.0	17.1
Max	20.1	36.9	28.1	1017.5	79.0	4.0	1.1		22.5	23.6	20.5
Dev.St.	0.6	0.6	0.4	1.2	4.7	0.7	0.2		3.1	1.8	0.9

**Dipartimento di Ingegneria "Enzo Ferrari"**  
**Università degli studi di Modena e Reggio Emilia**

**Osservatorio Geofisico - Stazione meteorologica di**  
**Karen Mogensen Reserve, Costa Rica,**

aprile 2020

	Tmin (°C)	Tmax (°C)	Tmed2 (°C)	PressMe d (hPa)	Umed (%)	Prec Tot (mm)	VelVent o Med (km/h)	DirVento domin.	VelVent o Max (km/h)	Rad.sol MJ/m2	UV dose MED
01/04/2020	21.1	34.3	27.7	1013.3	79.5	0	0.3	N	12.9	13.52	14.1
02/04/2020	21.1	35.3	28.2	1013.9	79.4	0	0.3	N	14.5	17.35	16.61
03/04/2020	22.3	35.9	29.1	1012.9	79.5	0	0.3	N	12.9	16.03	15.45
04/04/2020	20.9	37.4	29.2	1012.0	75.3	0	0.3	N	14.5	20.81	19.15
05/04/2020	20.7	36	28.4	1012.9	75.6	0	0.3	N	12.9	18.79	17.78
06/04/2020	20.9	35.8	28.4	1013.8	78.7	0	0.3	N	16.1	16.09	16.09
07/04/2020	21.1	37.4	29.3	1013.9	75.6	0	0.5	N	14.5	21.17	21.27
08/04/2020	19.7	37	28.4	1013.4	74.6	0	0.3	N	11.3	19.81	19.53
09/04/2020	20.7	37.3	29.0	1013.0	74.8	0	0.3	N	12.9	18.11	17.05
10/04/2020	21.9	35.4	28.7	1012.8	77.9	0	0.2	N	12.9	14.90	15.78
11/04/2020	23.9	37.1	30.5	1013.7	77.9	0	0.3	N	12.9	17.65	17.98
12/04/2020	23.3	34.4	28.9	1015.7	85.2	6.4	0.2	N	12.9	11.96	12.84
13/04/2020	21.8	34.3	28.1	1016.6	87.8	24	0.3	N	12.9	15.50	15.52
14/04/2020	23.6	35.3	29.5	1015.5	85.4	1.6	0.5	N	22.5	15.99	16.86
15/04/2020	22.1	31.9	27.0	1014.9	90.9	14.2	0.2	N	14.5	11.77	11.94
16/04/2020	22.2	34.7	28.5	1015.5	84.0	3.4	0.3	N	14.5	18.80	17.83
17/04/2020	20.3	34.7	27.5	1016.3	79.4	0	0.2	N	9.7	18.81	17.78
18/04/2020	19.8	35.6	27.7	1016.2	79.4	0	0.2	N	11.3	19.64	18.22
19/04/2020	22.2	32.8	27.5	1015.6	86.1	2	0.2	N	11.3	14.04	13.73
20/04/2020	21.2	34.8	28.0	1015.3	83.2	0.2	0.3	N	14.5	19.06	16.89
21/04/2020	21.3	32.1	26.7	1015.7	83.9	0	0.2	N	11.3	12.21	12.17
22/04/2020	21.4	33.8	27.6	1015.3	81.9	0	0.2	N	12.9	15.18	12.58
23/04/2020	21.9	31.9	26.9	1014.9	85.6	0	0.5	N	12.9	10.27	10.32
24/04/2020	21.9	32.9	27.4	1014.8	86.1	1.6	0.3	N	12.9	14.87	13.59
25/04/2020	22.4	31.9	27.2	1014.7	88.1	25.6	0.2	E	12.9	11.44	10.79
26/04/2020	21.6	34.3	28.0	1014.4	83.5	0.2	0.2	N	9.7	17.86	16.99
27/04/2020	21.3	33.5	27.4	1015.1	82.5	0	0.2	N	11.3	18.22	17.32
28/04/2020	21.2	32.7	27.0	1015.1	85.1	0	0	ESE	16.1	11.30	11.95
29/04/2020	20.2	33.1	26.7	1014.6	82.9	0	0	N	12.9	12.40	12.44
30/04/2020	22.7	31.3	27.0	1015.0	86.8	0	0.2	N	16.1	11.34	11.49
1° decade	21.0	36.2	28.6	1013.2	77.1	0.0	0.3		16.1	176.6	172.8
2° decade	22.0	34.6	28.3	1015.5	83.9	51.8	0.3		22.5	163.2	159.6
3° decade	21.6	32.8	27.2	1015.0	84.7	27.4	0.2		16.1	135.1	129.6
MESE	21.6	34.5	28.0	1014.6	81.9	79.2	0.3	#RIF!	22.5	474.9	462.0
Min	19.7	31.3	26.7	1012.0	74.6	0.0	0.0		9.7	10.3	10.3
Max	23.9	37.4	30.5	1016.6	90.9	25.6	0.5		22.5	21.2	21.3
Dev.St.	1.0	1.8	0.9	1.2	4.5	6.7	0.1		2.4	3.2	2.9

**Dipartimento di Ingegneria "Enzo Ferrari"**  
**Università degli studi di Modena e Reggio Emilia**

**Osservatorio Geofisico - Stazione meteorologica di**  
**Karen Mogensen Reserve, Costa Rica,**

**maggio 2020**

	Tmin (°C)	Tmax (°C)	Tmed2 (°C)	PressMe d (hPa)	Umed (%)	Prec Tot (mm)	VelVent o Med (km/h)	DirVento domin.	VelVent o Max (km/h)	Rad.sol MJ/m2	UV dose MED
01/05/2020	22.3	28.9	25.6	1015.5	90.2	0	0	N	4.8	6.29	6.28
02/05/2020	21.5	35	28.3	1015.1	81.1	0	0.3	N	14.5	15.96	16.03
03/05/2020	<b>20.6</b>	<b>36.5</b>	28.6	1013.7	<b>77.6</b>	0	0.3	W	14.5	<b>18.13</b>	<b>17.57</b>
04/05/2020	<b>20.6</b>	34.9	27.8	<b>1012.7</b>	83.5	0.8	0	N	11.3	13.87	13.15
05/05/2020	21.1	33.9	27.5	1013.2	86.4	2	0.2	N	14.5	11.84	11.53
06/05/2020	22.6	34.4	28.5	1013.3	84.9	0	0.3	N	14.5	15.41	14.8
07/05/2020	22.3	34.2	28.3	1013.6	85.3	0	0.2	N	12.9	12.36	12.16
08/05/2020	22.4	33.5	28.0	1013.8	83.8	0	0.2	N	9.7	13.09	13.35
09/05/2020	22.8	32.8	27.8	1013.9	86.2	0	0	N	9.7	10.19	11.08
10/05/2020	23.7	34.3	<b>29.0</b>	1014.4	88.5	1	0	N	16.1	11.36	11.74
11/05/2020	23.6	33.3	28.5	1014.7	88.1	0	0	N	12.9	11.28	11.49
12/05/2020	23.8	32.1	28.0	1015.1	86.3	0	0.5	N	14.5	10.61	11.04
13/05/2020	22.9	30.4	26.7	1015.0	87.1	0	1	N	19.3	11.23	10.55
14/05/2020	21.8	28.6	25.2	1015.0	90.6	2.2	0	N	9.7	7.49	7.98
15/05/2020	21.4	32.2	26.8	1013.9	88.7	0.6	0.5	SE	20.9	13.27	13.89
16/05/2020	22.8	32.7	27.8	1013.3	87.0	0	0.5	N	14.5	12.62	12.87
17/05/2020	22.7	34.7	28.7	1013.4	87.8	5.8	0.3	N	16.1	14.07	14.45
18/05/2020	22.4	32.6	27.5	1014.4	89.5	14.8	0.3	N	<b>25.7</b>	13.77	14.03
19/05/2020	21.8	29.8	25.8	1014.8	90.2	0.4	0.3	N	12.9	10.86	10.44
20/05/2020	21.9	31	26.5	1014.6	92.3	<b>48</b>	0.2	ESE	14.5	13.31	12.94
21/05/2020	22.4	31.8	27.1	1014.6	91.0	0.8	0.2	N	12.9	12.36	13.26
22/05/2020	22.6	33.4	28.0	1014.5	90.3	6.6	0	N	14.5	14.21	14.8
23/05/2020	23	32.4	27.7	1014.4	89.3	0	0.2	ESE	12.9	13.57	13.79
24/05/2020	23.9	31.7	27.8	1013.5	89.7	0	0.3	N	16.1	12.22	12.92
25/05/2020	23.4	29.9	26.7	1013.3	92.4	6.2	0.2	SE	12.9	9.19	9.01
26/05/2020	22.7	33	27.9	1013.5	92.1	26.4	0	ESE	9.7	14.21	13.74
27/05/2020	22.8	29.4	26.1	1014.5	93.0	12.4	0	N	9.7	10.91	10.44
28/05/2020	22.4	29.2	25.8	1015.5	93.5	14.6	0.2	N	12.9	10.63	9.58
29/05/2020	22.4	26.8	<b>24.6</b>	1016.2	94.2	17	0.2	N	16.1	6.85	7.02
30/05/2020	22.3	29.9	26.1	1016.6	91.4	18.2	0.2	N	11.3	13.87	14.46
31/05/2020	22.3	27.6	25.0	<b>1017.1</b>	<b>94.6</b>	14.2	0	SE	16.1	7.04	7.41
1° decade	22.0	33.8	27.9	1013.9	84.7	3.8	0.2		16.1	128.5	127.7
2° decade	22.5	31.7	27.1	1014.4	88.8	71.8	0.4		25.7	118.5	119.7
3° decade	22.7	30.5	26.6	1014.9	92.0	116.4	0.1		16.1	125.0	126.4
<b>MESE</b>	<b>22.4</b>	<b>32.0</b>	<b>27.2</b>	<b>1014.4</b>	<b>88.6</b>	<b>192.0</b>	<b>0.2</b>	<b>#RIF!</b>	<b>25.7</b>	<b>372.0</b>	<b>373.8</b>
<i>Min</i>	<i>20.6</i>	<i>26.8</i>	<i>24.6</i>	<i>1012.7</i>	<i>77.6</i>	<i>0.0</i>	<i>0.0</i>		<i>4.8</i>	<i>6.3</i>	<i>6.3</i>
<i>Max</i>	<i>23.9</i>	<i>36.5</i>	<i>29.0</i>	<i>1017.1</i>	<i>94.6</i>	<i>48.0</i>	<i>1.0</i>		<i>25.7</i>	<i>18.1</i>	<i>17.6</i>
<i>Dev.St.</i>	<i>0.8</i>	<i>2.4</i>	<i>1.2</i>	<i>1.0</i>	<i>3.9</i>	<i>10.6</i>	<i>0.2</i>		<i>3.8</i>	<i>2.7</i>	<i>2.7</i>

**Dipartimento di Ingegneria "Enzo Ferrari"**  
**Università degli studi di Modena e Reggio Emilia**

**Osservatorio Geofisico - Stazione meteorologica di**  
**Karen Mogensen Reserve, Costa Rica,**

giugno 2020

	Tmin (°C)	Tmax (°C)	Tmed2 (°C)	PressMe d (hPa)	Umed (%)	Prec Tot (mm)	VelVent o Med (km/h)	DirVento domin.	VelVent o Max (km/h)	Rad.sol MJ/m2	UV dose MED
01/06/2020	22.1	29.9	26.0	1017.0	94.3	14.6	0	E	8	11.89	11.91
02/06/2020	22.9	31.3	27.1	1015.5	91.8	0	0.2	NNE	12.9	15.11	14.85
03/06/2020	22.4	30.4	26.4	1014.4	93.6	13	0.2	E	16.1	9.81	10.13
04/06/2020	22.1	27.7	24.9	1015.3	95.0	25	0	ESE	4.8	8.02	6.86
05/06/2020	22.1	30.5	26.3	1016.0	92.2	2.4	0	ENE	4.8	13.40	14.09
06/06/2020	22.7	30.7	26.7	1016.3	93.0	6.8	0	ESE	9.7	11.00	10.57
07/06/2020	23.4	31.6	27.5	1014.8	91.3	1.4	0.2	ESE	17.7	14.38	13.25
08/06/2020	23.2	32.7	28.0	1014.4	89.6	0.2	0.2	SE	14.5	14.91	13.31
09/06/2020	21.4	29.8	25.6	1015.5	92.7	21.2	0	SE	12.9	9.89	9.13
10/06/2020	20.7	31.1	25.9	1016.5	90.5	4.4	0.2	SSE	16.1	17.15	16.06
11/06/2020	21.4	31.4	26.4	1015.8	92.3	21.6	0.2	ESE	11.3	13.00	12.22
12/06/2020	21.4	29.9	25.7	1014.5	90.5	0.4	0.3	ESE	17.7	12.17	11.9
13/06/2020	21.4	25.9	23.7	1014.9	94.4	2.8	0	SE	6.4	7.17	6.6
14/06/2020	21.3	31.2	26.3	1014.4	92.7	5.6	0	ENE	11.3	11.99	12.6
15/06/2020	23.1	28.4	25.8	1014.9	93.7	1.6	0	ESE	6.4	10.26	9.35
16/06/2020	21.9	30.1	26.0	1015.4	90.0	2.4	0.2	SE	14.5	11.65	12.44
17/06/2020	21.2	31.2	26.2	1014.5	90.6	0.2	0	SSE	14.5	15.66	15.1
18/06/2020	21.8	29.2	25.5	1014.3	90.4	0	0.5	ESE	14.5	14.96	14.28
19/06/2020	22.2	29.8	26.0	1014.3	92.7	29.4	0	ENE	9.7	9.71	9.55
20/06/2020	21.4	28.3	24.9	1014.7	92.9	0	0	SE	6.4	7.95	7.33
21/06/2020	21.8	31.2	26.5	1014.4	90.1	0.4	0	SE	12.9	14.70	13.93
22/06/2020	22.5	31.1	26.8	1013.8	90.7	0.4	0	SE	4.8	14.16	12.55
23/06/2020	22.2	31.7	27.0	1013.2	92.2	32.6	0	ESE	24.1	12.02	11.72
24/06/2020	21.8	30.6	26.2	1013.6	89.9	0.8	0.2	SE	14.5	16.25	14.89
25/06/2020	21.8	31.2	26.5	1013.9	89.8	0	0	ESE	11.3	17.11	13.88
26/06/2020	21.7	32.6	27.2	1013.9	87.6	0	0.2	SE	14.5	15.55	13.59
27/06/2020	22.6	26.9	24.8	1013.7	93.8	1.6	0	ESE	3.2	7.93	6.93
28/06/2020	22	30.3	26.2	1013.9	91.5	0.4	0	SE	9.7	9.53	9.68
29/06/2020	22.4	31.3	26.9	1014.2	92.7	20.8	0	ESE	4.8	13.12	11.65
30/06/2020	22.7	29.5	26.1	1014.1	90.3	7.2	0	N	9.7	8.20	8.55
1° decade	22.3	30.6	26.4	1015.6	92.4	89.0	0.1		17.7	125.6	120.2
2° decade	21.7	29.5	25.6	1014.8	92.0	64.0	0.1		17.7	114.5	111.4
3° decade	22.2	30.6	26.4	1013.9	90.9	64.2	0.0		24.1	128.6	117.4
MESE	22.1	30.3	26.2	1014.7	91.8	217.2	0.1	#RIF!	24.1	368.7	348.9
Min	20.7	25.9	23.7	1013.2	87.6	0.0	0.0		3.2	7.2	6.6
Max	23.4	32.7	28.0	1017.0	95.0	32.6	0.5		24.1	17.2	16.1
Dev.St.	0.6	1.6	0.9	0.9	1.7	10.0	0.1		4.9	3.0	2.7

**Dipartimento di Ingegneria "Enzo Ferrari"**  
**Università degli studi di Modena e Reggio Emilia**

**Osservatorio Geofisico - Stazione meteorologica di**  
**Karen Mogensen Reserve, Costa Rica,**

luglio 2020

	Tmin (°C)	Tmax (°C)	Tmed2 (°C)	PressMe d (hPa)	Umed (%)	Prec Tot (mm)	VelVent o Med (km/h)	DirVento domin.	VelVent o Max (km/h)	Rad.sol MJ/m2	UV dose MED
01/07/2020	21.6	29.2	25.4	1014.4	90.9	0.6	0.3	SE	12.9	13.48	12.35
02/07/2020	<b>20.3</b>	28.5	<b>24.4</b>	1014.5	92.4	0.6	0	WNW	1.6	9.44	8.21
03/07/2020	21.9	30.1	26.0	1013.9	92.4	<b>105</b>	0	ESE	14.5	12.56	11.99
04/07/2020	22.3	29.1	25.7	1014.4	92.6	10.8	0.2	SE	<b>16.1</b>	10.64	9.52
05/07/2020	21.7	30.1	25.9	1014.6	91.2	0.6	0.2	ESE	<b>16.1</b>	14.40	12.56
06/07/2020	22.2	28.9	25.6	1015.5	92.4	1.6	0	ESE	6.4	11.05	9.37
07/07/2020	20.7	31.4	26.1	1015.0	90.0	0.2	0	ESE	12.9	17.34	14.54
08/07/2020	21.8	30.8	26.3	1014.1	90.1	0	0	SE	12.9	14.13	12.88
09/07/2020	21.3	29.6	25.5	1014.0	92.1	0.2	0.2	SE	<b>16.1</b>	9.29	7.43
10/07/2020	21.2	29.6	25.4	1015.9	92.2	20	0	E	8	11.18	10.3
11/07/2020	21.6	29.1	25.4	1015.9	92.5	0.4	0.2	SE	<b>16.1</b>	10.83	9.78
12/07/2020	21.9	29.4	25.7	1015.0	90.4	0	0.2	ESE	11.3	11.47	9.93
13/07/2020	21.7	27.3	24.5	1015.6	93.7	0.2	0	SE	1.6	6.47	5.61
14/07/2020	20.5	30.7	25.6	1014.5	91.5	1.4	0	ESE	11.3	11.81	10.99
15/07/2020	21.6	29.2	25.4	1014.3	92.6	3.6	0	ESE	8	10.03	9.02
16/07/2020	20.8	32.1	26.5	1013.7	89.1	0	0	ESE	11.3	18.19	14.82
17/07/2020	20.4	<b>32.8</b>	26.6	1013.1	<b>85.0</b>	0	0	ESE	9.7	<b>20.16</b>	<b>16.18</b>
18/07/2020	21.9	31.4	26.7	1013.2	88.3	0	0.2	SE	12.9	15.53	13.39
19/07/2020	22.2	31.8	<b>27.0</b>	<b>1012.6</b>	89.2	1.4	0	SE	12.9	15.63	13.6
20/07/2020	21.7	30.8	26.3	1013.0	90.7	9	0.2	SE	14.5	14.58	13.36
21/07/2020	21.9	29.4	25.7	1014.8	91.0	0	0.2	SE	12.9	12.19	10.91
22/07/2020	22.7	30.3	26.5	1015.1	89.0	1.2	0	---	0	15.54	12.74
23/07/2020	21.6	29.7	25.7	1014.7	91.4	15.4	0	---	0	12.07	10.24
24/07/2020	21.7	31	26.4	1014.9	92.3	39	0	---	0	14.87	12.85
25/07/2020	21.8	27.7	24.8	1015.5	93.5	18.8	0	---	0	10.20	9.78
26/07/2020	21.5	29.6	25.6	<b>1015.9</b>	93.3	13	0	---	0	12.58	11.55
27/07/2020	22.4	31.2	26.8	1015.2	92.3	56	0	---	0	14.07	12.87
28/07/2020	21.4	28.1	24.8	1014.9	<b>94.5</b>	4.2	0	---	0	8.70	7.57
29/07/2020	21.8	31.2	26.5	1014.1	90.9	0.2	0	---	0	16.38	14.41
30/07/2020	21.8	30.9	26.4	1013.0	90.0	0	0	---	0	14.92	12.65
31/07/2020	21.2	32.4	26.8	1013.3	88.5	0	0	---	0	18.49	15.47
1° decade	21.5	29.7	25.6	1014.6	91.6	139.6	0.1		16.1	123.5	109.2
2° decade	21.4	30.5	25.9	1014.1	90.3	16.0	0.1		16.1	134.7	116.7
3° decade	21.8	30.1	26.0	1014.7	91.5	147.8	0.0		12.9	150.0	131.0
<b>MESE</b>	<b>21.6</b>	<b>30.1</b>	<b>25.8</b>	<b>1014.5</b>	<b>91.2</b>	<b>303.4</b>	<b>0.1</b>	<b>#RIF!</b>	<b>16.1</b>	<b>408.2</b>	<b>356.9</b>
<i>Min</i>	<i>20.3</i>	<i>27.3</i>	<i>24.4</i>	<i>1012.6</i>	<i>85.0</i>	<i>0.0</i>	<i>0.0</i>		<i>0.0</i>	<i>6.5</i>	<i>5.6</i>
<i>Max</i>	<i>22.7</i>	<i>32.8</i>	<i>27.0</i>	<i>1015.9</i>	<i>94.5</i>	<i>105.0</i>	<i>0.3</i>		<i>16.1</i>	<i>20.2</i>	<i>16.2</i>
<i>Dev.St.</i>	<i>0.6</i>	<i>1.4</i>	<i>0.7</i>	<i>0.9</i>	<i>1.9</i>	<i>21.7</i>	<i>0.1</i>		<i>6.5</i>	<i>3.2</i>	<i>2.5</i>

**Dipartimento di Ingegneria "Enzo Ferrari"**  
**Università degli studi di Modena e Reggio Emilia**

**Osservatorio Geofisico - Stazione meteorologica di**  
**Karen Mogensen Reserve, Costa Rica,**

agosto 2020

	Tmin (°C)	Tmax (°C)	Tmed2 (°C)	PressMe d (hPa)	Umed (%)	Prec Tot (mm)	VelVent o Med (km/h)	DirVento domin.	VelVent o Max (km/h)	Rad.sol MJ/m2	UV dose MED
01/08/2020	22.2	31.8	27.0	1013.6	89.6	0	0	---	0	14.40	12.27
02/08/2020	22.7	30.4	26.6	1014.0	92.1	0.2	0	---	0	10.09	8.74
03/08/2020	22.6	31.6	27.1	1015.3	90.5	18	0	SE	16.1	13.04	11.52
04/08/2020	22	30.6	26.3	1015.4	92.4	3.6	0	ESE	12.9	12.82	12.25
05/08/2020	21.2	29.9	25.6	1015.1	93.2	39	0.5	SE	<b>32.2</b>	10.42	9.43
06/08/2020	<b>19.8</b>	27.9	23.9	1014.7	91.2	0	0.2	SE	12.9	11.99	11.3
07/08/2020	21.4	30.5	26.0	1015.0	91.4	0	0	ENE	1.6	10.96	9.8
08/08/2020	22.4	32.3	<b>27.4</b>	1014.5	89.2	0.2	0	SE	19.3	18.51	16.62
09/08/2020	22.1	31.7	26.9	1014.1	89.1	10	0.2	SE	16.1	15.28	13.9
10/08/2020	21.9	28.8	25.4	1013.8	93.0	54.6	0	SE	4.8	9.67	8.85
11/08/2020	21.8	31.1	26.5	1012.6	91.4	0.2	0	ESE	12.9	15.05	14.59
12/08/2020	20.3	<b>32.7</b>	26.5	1012.0	<b>87.8</b>	0.8	0	SE	6.4	<b>20.26</b>	<b>17.44</b>
13/08/2020	22.8	29.1	26.0	<b>1011.8</b>	92.9	1.8	0	SE	4.8	8.76	8.43
14/08/2020	22.1	29.4	25.8	1011.9	93.8	65.8	0	SE	11.3	10.18	8.75
15/08/2020	21.4	26.6	24.0	1013.8	94.5	1.4	0	NE	3.2	8.55	8.41
16/08/2020	21.8	28.8	25.3	1014.7	93.4	42.8	0	SE	6.4	10.26	10.22
17/08/2020	21.3	30.3	25.8	1015.2	91.4	1	0.2	SE	12.9	16.00	13.81
18/08/2020	21.4	29.3	25.4	1015.1	93.0	0	0	SE	6.4	9.85	9.49
19/08/2020	21.7	29.9	25.8	1015.2	92.4	23.8	0	SE	17.7	12.32	10.75
20/08/2020	21.6	26.1	23.9	1015.6	94.7	0.8	0	ESE	6.4	7.82	7.07
21/08/2020	22.1	25.4	23.8	1015.7	<b>96.2</b>	<b>84.8</b>	0	ESE	6.4	6.02	6.13
22/08/2020	21.3	28.2	24.8	1015.5	92.5	0.4	0	SE	6.4	13.46	11.67
23/08/2020	21.4	26.8	24.1	1015.4	92.8	0	0	ESE	3.2	7.99	7.2
24/08/2020	21.6	27.7	24.7	1014.9	93.5	0.2	0	ENE	4.8	9.25	9.01
25/08/2020	22.1	29.2	25.7	1013.4	92.4	10.6	0	NNE	6.4	12.78	11.84
26/08/2020	21.8	23.4	<b>22.6</b>	1015.1	95.6	79.6	0.5	SE	27.4	4.74	4.61
27/08/2020	21.4	28.1	24.8	<b>1016.9</b>	94.6	10.8	0	SE	4.8	9.42	9.41
28/08/2020	22.2	30.6	26.4	1016.6	93.0	4.2	0	SE	12.9	14.61	13.12
29/08/2020	22.2	31.4	26.8	1016.2	91.5	0	0.2	SE	12.9	16.86	14.45
30/08/2020	21.9	29.8	25.9	1015.2	90.9	0	0	SE	14.5	13.95	11.96
31/08/2020	20.8	30.8	25.8	1015.4	91.8	4.2	0	E	3.2	13.95	12.36
1° decade	21.8	30.6	26.2	1014.6	91.2	125.6	0.1		32.2	127.2	114.7
2° decade	21.6	29.3	25.5	1013.8	92.5	138.4	0.0		17.7	119.1	109.0
3° decade	21.7	28.3	25.0	1015.5	93.2	194.8	0.1		27.4	123.1	111.8
<b>MESE</b>	<b>21.7</b>	<b>29.4</b>	<b>25.5</b>	<b>1014.6</b>	<b>92.3</b>	<b>458.8</b>	<b>0.1</b>	<b>#RIF!</b>	<b>32.2</b>	<b>369.3</b>	<b>335.4</b>
<i>Min</i>	<b>19.8</b>	<b>23.4</b>	<b>22.6</b>	<b>1011.8</b>	<b>87.8</b>	<b>0.0</b>	<b>0.0</b>		<b>0.0</b>	<b>4.7</b>	<b>4.6</b>
<i>Max</i>	<b>22.8</b>	<b>32.7</b>	<b>27.4</b>	<b>1016.9</b>	<b>96.2</b>	<b>84.8</b>	<b>0.5</b>		<b>32.2</b>	<b>20.3</b>	<b>17.4</b>
<i>Dev.St.</i>	<b>0.6</b>	<b>2.1</b>	<b>1.2</b>	<b>1.3</b>	<b>1.9</b>	<b>25.0</b>	<b>0.1</b>		<b>7.5</b>	<b>3.5</b>	<b>2.9</b>

**Dipartimento di Ingegneria "Enzo Ferrari"**  
**Università degli studi di Modena e Reggio Emilia**

**Osservatorio Geofisico - Stazione meteorologica di**  
**Karen Mogensen Reserve, Costa Rica,**

settembre 2020

	Tmin (°C)	Tmax (°C)	Tmed2 (°C)	PressMe d (hPa)	Umed (%)	Prec Tot (mm)	VelVent o Med (km/h)	DirVento domin.	VelVent o Max (km/h)	Rad.sol MJ/m2	UV dose MED
01/09/2020	22.2	29.8	26.0	1015.4	93.3	2	0	SE	11.3	11.95	9.95
02/09/2020	<b>20.8</b>	30.2	25.5	1014.0	92.2	20.2	0	ESE	11.3	16.58	14.19
03/09/2020	21.6	29.9	25.8	1013.1	92.3	0.6	0	SE	9.7	14.15	12.22
04/09/2020	21.8	29.3	25.6	1013.7	91.5	0	0	ESE	14.5	15.95	13.63
05/09/2020	22.2	29.3	25.8	1015.2	93.4	15.4	0	SE	6.4	11.07	9.33
06/09/2020	21.4	28.7	25.1	1014.4	94.1	15.4	0	SE	4.8	11.71	10.71
07/09/2020	21.8	30.4	26.1	1013.4	92.1	10.6	0	ESE	6.4	15.52	13.09
08/09/2020	21.8	30.1	26.0	1013.6	<b>89.3</b>	0	0.2	SE	14.5	17.13	15.2
09/09/2020	21.9	30.2	26.1	1015.2	92.1	10.6	0.2	SE	11.3	15.34	13.73
10/09/2020	22.2	29.6	25.9	1015.3	92.7	0.2	0.2	SE	11.3	12.20	11.17
11/09/2020	22.3	30.6	26.5	1013.6	91.5	0	0.2	SE	16.1	13.25	11.74
12/09/2020	21.9	30.2	26.1	1013.0	92.1	13.2	0.2	N	11.3	17.35	14.59
13/09/2020	21.1	29.8	25.5	1013.8	91.6	0.2	0.2	SE	12.9	17.52	14.71
14/09/2020	22.4	28.7	25.6	1016.1	94.7	11.4	0	E	6.4	10.11	9.53
15/09/2020	22.1	30.9	26.5	1016.7	94.1	9.6	0	ENE	9.7	12.13	11.51
16/09/2020	22.4	<b>31.8</b>	<b>27.1</b>	1015.5	91.1	1.8	0.2	SE	12.9	<b>20.32</b>	<b>16.42</b>
17/09/2020	22.1	30.9	26.5	1015.5	92.8	39.2	0	N	12.9	14.96	13.02
18/09/2020	21.6	30.3	26.0	1015.3	93.5	1.6	0	ESE	6.4	13.65	11.31
19/09/2020	21.7	30.2	26.0	1014.5	93.8	4.2	0	ESE	8	11.96	11.28
20/09/2020	22.7	29.4	26.1	1014.2	94.9	34.6	0	E	11.3	9.45	8.92
21/09/2020	21.6	30.7	26.2	1014.1	91.2	0	0.2	ESE	12.9	17.64	15.56
22/09/2020	22.2	30.5	26.4	1014.3	93.3	34	0	N	6.4	11.50	10.56
23/09/2020	21.9	27.9	24.9	1015.2	93.8	21.6	0.6	N	<b>17.7</b>	11.47	11.12
24/09/2020	21.9	26.9	<b>24.4</b>	1016.8	<b>95.5</b>	<b>41.4</b>	0	N	11.3	8.15	7.47
25/09/2020	21.2	29.8	25.5	<b>1017.3</b>	93.9	8.8	0	E	4.8	13.26	12.54
26/09/2020	21.9	31.3	26.6	1015.9	92.7	0	0	N	9.7	14.50	13.13
27/09/2020	21.9	30.4	26.2	1014.3	94.0	17.6	0	E	6.4	10.26	9.49
28/09/2020	22.3	29.8	26.1	<b>1012.6</b>	92.4	2.8	0	ESE	11.3	13.58	11.64
29/09/2020	22.1	30.3	26.2	1013.4	93.1	0	0	N	6.4	11.56	11.35
30/09/2020	21.7	29.2	25.5	1014.4	93.8	5.6	0	ESE	4.8	10.46	10.45
1° decade	21.8	29.8	25.8	1014.3	92.3	75.0	0.1		14.5	141.6	123.2
2° decade	22.0	30.3	26.2	1014.8	93.0	115.8	0.1		16.1	140.7	123.0
3° decade	21.9	29.7	25.8	1014.8	93.4	131.8	0.1		17.7	122.4	113.3
<b>MESE</b>	<b>21.9</b>	<b>29.9</b>	<b>25.9</b>	<b>1014.7</b>	<b>92.9</b>	<b>322.6</b>	<b>0.1</b>	<b>#RIF!</b>	<b>17.7</b>	<b>404.7</b>	<b>359.6</b>
<i>Min</i>	<i>20.8</i>	<i>26.9</i>	<i>24.4</i>	<i>1012.6</i>	<i>89.3</i>	<i>0.0</i>	<i>0.0</i>		<i>4.8</i>	<i>8.2</i>	<i>7.5</i>
<i>Max</i>	<i>22.7</i>	<i>31.8</i>	<i>27.1</i>	<i>1017.3</i>	<i>95.5</i>	<i>41.4</i>	<i>0.6</i>		<i>17.7</i>	<i>20.3</i>	<i>16.4</i>
<i>Dev.St.</i>	<i>0.4</i>	<i>1.0</i>	<i>0.5</i>	<i>1.2</i>	<i>1.3</i>	<i>12.5</i>	<i>0.1</i>		<i>3.5</i>	<i>2.9</i>	<i>2.1</i>



**Dipartimento di Ingegneria "Enzo Ferrari"**  
**Università degli studi di Modena e Reggio Emilia**

**Osservatorio Geofisico - Stazione meteorologica di**  
**Karen Mogensen Reserve, Costa Rica,**

ottobre 2020

	Tmin (°C)	Tmax (°C)	Tmed2 (°C)	PressMe d (hPa)	Umed (%)	Prec Tot (mm)	VelVent o Med (km/h)	DirVento domin.	VelVent o Max (km/h)	Rad.sol MJ/m2	UV dose MED
01/10/2020	22.3	30	26.2	1013.5	94.2	3.6	0	SE	9.7	11.05	10.83
02/10/2020	22.2	28.7	25.5	1013.0	94.8	21.2	0	N	8	10.72	9.35
03/10/2020	21.6	27.9	24.8	1013.9	95.4	27.4	0	N	11.3	9.37	8.77
04/10/2020	21.8	25.7	23.8	1015.1	97.3	31.8	0	N	1.6	4.25	3.5
05/10/2020	21.5	28.9	25.2	1014.7	96.4	10.6	0	N	8	8.10	7.64
06/10/2020	22.1	26.2	24.2	1014.1	97.1	21	0	N	9.7	5.64	4.52
07/10/2020	21.9	25.9	23.9	1015.3	97.1	20.8	0	N	14.5	5.25	4.68
08/10/2020	21.6	27.3	24.5	1016.1	96.5	26	0	N	9.7	7.65	7.05
09/10/2020	21.4	29.2	25.3	1016.1	94.9	16.2	0	N	9.7	11.94	10.26
10/10/2020	21.8	30.2	26.0	1014.6	93.7	0.2	0	---	0	11.48	9.44
11/10/2020	21.8	31.4	26.6	1013.3	91.8	0.2	0	ESE	11.3	<b>18.00</b>	<b>13.63</b>
12/10/2020	22.3	30.4	26.4	1013.4	93.9	9.2	0	ESE	9.7	10.23	9.14
13/10/2020	22.9	28.4	25.7	1014.3	93.9	10	0	SE	11.3	10.01	8.24
14/10/2020	22.5	30.5	26.5	1013.5	92.3	19.2	0	ESE	14.5	14.85	12.37
15/10/2020	21.8	29.7	25.8	1012.9	92.0	1.6	0	ESE	9.7	13.88	11.56
16/10/2020	21.5	29.7	25.6	1013.5	94.0	3.6	0	SE	4.8	10.57	9.19
17/10/2020	<b>21.3</b>	<b>31.6</b>	26.5	1013.0	91.7	0	0	N	1.6	15.67	12.65
18/10/2020	22.3	31.3	26.8	1012.4	90.6	0.4	0	SE	14.5	15.76	13.17
19/10/2020	22.2	29.4	25.8	1012.3	94.6	22.6	0	N	6.4	8.69	6.89
20/10/2020	22.6	25.1	23.9	1012.5	96.5	35.6	0	N	<b>16.1</b>	3.89	3.56
21/10/2020	22.2	24.9	<b>23.6</b>	1014.1	97.8	17.2	0	N	4.8	2.20	1.67
22/10/2020	21.6	30.1	25.9	1014.6	94.3	0.2	0	ESE	11.3	12.44	10.82
23/10/2020	22.1	30.5	26.3	1015.0	92.6	0.2	0	SE	6.4	14.33	12.13
24/10/2020	21.7	29.3	25.5	1015.0	93.6	27	0	N	6.4	12.02	9.7
25/10/2020	<b>21.3</b>	26.3	23.8	1014.9	96.8	<b>36.8</b>	0	N	1.6	5.10	4.43
26/10/2020	22	28.2	25.1	1014.5	96.4	11.6	0	N	6.4	6.59	6.04
27/10/2020	<b>21.3</b>	28.9	25.1	1014.2	95.3	2.2	0	ESE	3.2	9.91	8.76
28/10/2020	23.4	28.5	26.0	1013.5	96.0	4	0	SE	4.8	6.74	5.88
29/10/2020	22.8	30.9	<b>26.9</b>	1013.5	93.7	4.4	0.2	N	14.5	13.22	10.18
30/10/2020	22.6	26.2	24.4	1015.5	96.7	4.6	0	N	6.4	4.58	4.4
31/10/2020	21.7	29.5	25.6	1016.0	94.5	24.2	0	N	4.8	10.96	9.14
1° decade	21.8	28.0	24.9	1014.6	95.7	178.8	0.0		14.5	85.4	76.0
2° decade	22.1	29.8	25.9	1013.1	93.1	102.4	0.0		16.1	121.6	100.4
3° decade	22.1	28.5	25.3	1014.6	95.2	132.4	0.0		14.5	98.1	83.2
<b>MESE</b>	<b>22.0</b>	<b>28.7</b>	<b>25.4</b>	<b>1014.1</b>	<b>94.7</b>	<b>413.6</b>	<b>0.0</b>	<b>#RIF!</b>	<b>16.1</b>	<b>305.1</b>	<b>259.6</b>
<i>Min</i>	<i>21.3</i>	<i>24.9</i>	<i>23.6</i>	<i>1012.3</i>	<i>90.6</i>	<i>0.0</i>	<i>0.0</i>		<i>0.0</i>	<i>2.2</i>	<i>1.7</i>
<i>Max</i>	<i>23.4</i>	<i>31.6</i>	<i>26.9</i>	<i>1016.1</i>	<i>97.8</i>	<i>36.8</i>	<i>0.2</i>		<i>16.1</i>	<i>18.0</i>	<i>13.6</i>
<i>Dev.St.</i>	<i>0.5</i>	<i>1.9</i>	<i>1.0</i>	<i>1.1</i>	<i>1.9</i>	<i>11.7</i>	<i>0.0</i>		<i>4.3</i>	<i>4.0</i>	<i>3.2</i>

**Dipartimento di Ingegneria "Enzo Ferrari"**  
**Università degli studi di Modena e Reggio Emilia**

**Osservatorio Geofisico - Stazione meteorologica di**  
**Karen Mogensen Reserve, Costa Rica,**

novembre 2020

	Tmin (°C)	Tmax (°C)	Tmed2 (°C)	PressMe d (hPa)	Umed (%)	Prec Tot (mm)	VelVent o Med (km/h)	DirVento domin.	VelVent o Max (km/h)	Rad.sol MJ/m2	UV dose MED
01/11/2020	22.1	28.1	25.1	1014.6	95.2	0.2	0	ENE	8	9.09	8.31
02/11/2020	21.8	27.2	24.5	1013.5	96.4	20.4	0	N	3.2	5.04	5
03/11/2020	21.8	23.7	22.8	1012.8	98.1	48	0	N	4.8	1.68	0.92
04/11/2020	21.6	24.7	23.2	1013.1	96.8	22.6	0	N	14.5	5.12	4.32
05/11/2020	21.5	25.7	23.6	1014.3	96.9	22	0.2	N	14.5	4.76	4.49
06/11/2020	21.3	23.6	22.5	1014.6	96.8	7	0.3	N	16.1	3.36	2.71
07/11/2020	21.5	26.1	23.8	1015.1	96.1	0.4	0.2	N	12.9	8.22	7.01
08/11/2020	22.1	25.9	24.0	1015.9	97.1	18.4	0	N	3.2	6.06	4.87
09/11/2020	21.9	26.8	24.4	1016.0	97.3	14.6	0	N	3.2	5.48	4.66
10/11/2020	21.9	26.6	24.3	1016.4	97.1	25.2	0	N	11.3	7.81	7.11
11/11/2020	21.8	29	25.4	1016.3	95.0	0.2	0	NE	4.8	11.76	9.67
12/11/2020	21.9	29.7	25.8	1015.3	93.8	6.4	0	ESE	11.3	13.05	10.67
13/11/2020	22.2	29.7	26.0	1015.6	94.0	0	0	N	4.8	13.29	11.01
14/11/2020	20.9	29.5	25.2	1015.3	95.1	3	0	SE	6.4	8.51	7.36
15/11/2020	23	30.3	26.7	1014.3	94.8	10.6	0	ESE	6.4	11.21	9.57
16/11/2020	22.2	28.3	25.3	1013.8	95.5	1.4	0	ESE	9.7	9.32	7.82
17/11/2020	22.3	26.1	24.2	1014.4	95.3	9.4	0.6	N	19.3	6.67	5.98
18/11/2020	20.7	26.9	23.8	1015.7	95.3	3	0	SE	8	7.96	6.37
19/11/2020	20.3	30.7	25.5	1015.2	94.5	11.8	0	N	3.2	10.85	8.99
20/11/2020	21.2	31.3	26.3	1014.2	93.4	4.4	0	SE	11.3	14.79	11.86
21/11/2020	21.4	29.7	25.6	1013.3	93.3	12	0.2	SE	17.7	11.94	9.87
22/11/2020	21.9	24.6	23.3	1013.5	97.4	51.4	0.2	N	12.9	3.23	3.07
23/11/2020	22.2	28.6	25.4	1014.4	94.9	5.6	0	E	6.4	10.04	8.58
24/11/2020	22.3	30.9	26.6	1014.0	94.2	0.8	0	E	8	10.78	9.42
25/11/2020	22.7	29.8	26.3	1014.5	94.3	0	0.2	SE	11.3	8.03	7.14
26/11/2020	22.5	31.7	27.1	1013.7	89.7	0	0	N	11.3	12.93	11.43
27/11/2020	21.5	30.3	25.9	1013.9	93.2	24.4	0	ESE	11.3	11.26	9.07
28/11/2020	21.3	31.6	26.5	1014.3	92.1	1.4	0	ESE	6.4	15.26	11.6
29/11/2020	21.1	30.1	25.6	1014.6	93.0	1	0	SE	6.4	11.58	9.85
30/11/2020	21.4	29.9	25.7	1014.4	93.5	0	0	ENE	3.2	10.80	9.28
1° decade	21.8	25.8	23.8	1014.6	96.8	178.8	0.1		16.1	56.6	49.4
2° decade	21.7	29.2	25.4	1015.0	94.7	50.2	0.1		19.3	107.4	89.3
3° decade	21.8	29.7	25.8	1014.1	93.6	96.6	0.1		17.7	105.9	89.3
<b>MESE</b>	<b>21.7</b>	<b>28.2</b>	<b>25.0</b>	<b>1014.6</b>	<b>95.0</b>	<b>325.6</b>	<b>0.1</b>		<b>19.3</b>	<b>269.9</b>	<b>228.0</b>
<i>Min</i>	20.3	23.6	22.5	1012.8	89.7	0.0	0.0		3.2	1.7	0.9
<i>Max</i>	23.0	31.7	27.1	1016.4	98.1	51.4	0.6		19.3	15.3	11.9
<i>Dev.St.</i>	0.6	2.4	1.2	0.9	1.8	13.5	0.1		4.6	3.5	2.9

**Dipartimento di Ingegneria "Enzo Ferrari"**  
**Università degli studi di Modena e Reggio Emilia**

**Osservatorio Geofisico - Stazione meteorologica di**  
**Karen Mogensen Reserve, Costa Rica**

dicembre 2020

	Tmin (°C)	Tmax (°C)	Tmed2 (°C)	PressMe d (hPa)	Umed (%)	Prec Tot (mm)	VelVent o Med (km/h)	DirVento domin.	VelVent o Max (km/h)	Rad.sol MJ/m2	UV dose MED
01/12/2020	20.8	30.6	25.7	1014.3	91.7	0	0	NE	6.4	12.36	10.83
02/12/2020	22.1	28.5	25.3	1014.6	95.1	1.8	0	N	6.4	6.65	6.33
03/12/2020	22.1	29.1	25.6	1014.6	94.4	1.2	0	SE	6.4	6.03	5.27
04/12/2020											
05/12/2020											
06/12/2020											
07/12/2020	20.2	31.8	26.0	1015.1	90.0	0	0.2	ENE	14.5	16.09	12.03
08/12/2020	19.4	31.7	25.6	1016.8	88.2	0	0	NE	9.7	17.00	12.98
09/12/2020	18.6	30.4	24.5	1017.2	87.0	0	0.2	N	14.5	16.55	12.9
10/12/2020	19.1	29.3	24.2	1016.0	90.6	0	0	N	6.4	11.21	9.87
11/12/2020	18.4	30.7	24.6	1014.3	90.1	0	0	ESE	6.4	12.91	11.25
12/12/2020	18.6	32.2	25.4	1014.0	87.0	0	0	NW	8	17.47	12.87
13/12/2020	18.9	32.8	25.9	1014.9	87.3	0	0	NW	6.4	16.01	12.46
14/12/2020	19.7	32.1	25.9	1015.2	87.3	0	0	ENE	9.7	17.28	13.04
15/12/2020	19.4	32.2	25.8	1014.2	87.7	0	0	ESE	11.3	16.06	12.64
16/12/2020	21.3	31.4	26.4	1014.0	91.2	1.6	0	ESE	8	13.36	10.79
17/12/2020	20.4	31.1	25.8	1014.5	88.0	0	0	E	11.3	14.55	12.5
18/12/2020	19.4	31.6	25.5	1014.8	86.2	0	0.2	ENE	17.7	17.42	13.48
19/12/2020	18.9	31.3	25.1	1014.2	89.8	0	0	ENE	11.3	13.60	11.31
20/12/2020	19.4	32.8	26.1	1013.6	87.5	0	0	E	14.5	16.06	13
21/12/2020	18.9	32.7	25.8	1014.5	85.9	0	0	N	11.3	17.73	13.58
22/12/2020	18.1	33.1	25.6	1014.9	86.5	0	0	ENE	9.7	17.04	13.37
23/12/2020	19.6	32.1	25.9	1014.1	90.0	0	0	N	6.4	12.25	10.87
24/12/2020	19.3	33.5	26.4	1014.3	86.4	0	0	NNE	6.4	16.78	13.21
25/12/2020	18.3	32.9	25.6	1014.5	85.3	0.2	0.2	NE	11.3	17.62	13.44
26/12/2020	18.3	30.9	24.6	1014.8	87.7	0	0	ENE	4.8	13.98	11.49
27/12/2020	18.8	30.8	24.8	1015.0	86.4	0	0.2	N	9.7	17.15	13.62
28/12/2020	18.6	31.7	25.2	1015.3	87.1	0	0	ESE	11.3	15.88	13.15
29/12/2020	19.8	29.3	24.6	1015.1	90.4	7.2	0.2	N	17.7	11.29	10.41
30/12/2020	21.5	26.9	24.2	1015.3	95.1	4.2	0	N	1.6	6.91	6.79
31/12/2020	21.7	28.3	25.0	1015.2	94.5	7.6	0	ENE	6.4	10.29	8.37
1° decade	20.3	30.2	25.3	1015.5	91.0	3.0	0.1		14.5	85.9	70.2
2° decade	19.4	31.8	25.6	1014.4	88.2	1.6	0.0		17.7	154.7	123.3
3° decade	19.4	31.1	25.2	1014.8	88.7	19.2	0.1		17.7	156.9	128.3
<b>MESE</b>	<b>19.6</b>	<b>31.1</b>	<b>25.4</b>	<b>1014.8</b>	<b>89.1</b>	<b>23.8</b>	<b>0.0</b>	<b>#RIF!</b>	<b>17.7</b>	<b>397.5</b>	<b>321.9</b>
<i>Min</i>	18.1	26.9	24.2	1013.6	85.3	0.0	0.0		1.6	6.0	5.3
<i>Max</i>	22.1	33.5	26.4	1017.2	95.1	7.6	0.2		17.7	17.7	13.6
<i>Dev.St.</i>	1.2	1.6	0.6	0.8	2.9	2.1	0.1		3.9	3.5	2.3